

# SENSAPHONE<sup>®</sup>

## REMOTE MONITORING SOLUTIONS



Sensaphone SAT4D

Remote Monitoring via Satellite

# ASSURANCE

COUNTLESS INDUSTRIES DEPEND ON SENSAPHONE FOR THE MOST COMPREHENSIVE REMOTE MONITORING SOLUTIONS AVAILABLE. WHEN YOU NEED TO BE ABSOLUTELY SURE A REMOTE SITE IS STABLE, SECURE AND MONITORED AROUND THE CLOCK, THERE'S NO SUBSTITUTE FOR CERTAINTY.

## Easy to use – everyday

The Sensaphone SAT4D is so easy to use just about anyone can figure it out. If not, we offer free tech support to walk you through it.

## We've got a sensor for that

Sensaphone has a sensor for monitoring everything from climate conditions to security and more.

## Your business is our business

With over 350,000 systems installed worldwide, we've put Sensaphone to the test in just about every application imaginable.

## Suggested Applications



### Agriculture

Know that the temperature, humidity, or other critical conditions where plants or animals live are in check while you're away.



### Water & Wastewater

Use your Sensaphone SAT4D to monitor pumps, power failure and other conditions in water and wastewater applications.



### Oil & Gas

Don't find out about equipment failure until the morning. The Sensaphone SAT4D will call or e-mail as soon as an alarm condition exists.

# Sensaphone SAT4D

## Features and Specifications



### Battery Powered

Long life lithium batteries power the SAT4D for up to three years.

### Inputs

Accept four different dry contact inputs.

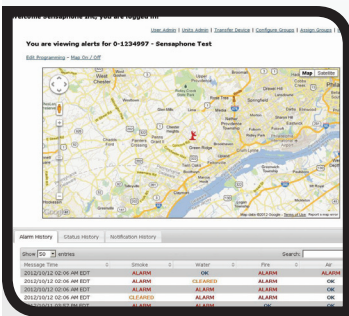


### Enclosure

The SAT4D comes sealed in a NEXA 4X enclosure which allows it to be placed in less than ideal environments. The SAT4D can withstand temperatures down to -40°F | -40°C.

### Satellite Communication

Use the SAT4D in locations where a traditional land line or cellular coverage is not available. Receive alarms via a phone call, text, or e-mail. Or check the status on the SAT4D's web page.



### Web Services

Program, adjust and monitor the status of the sensors on a web page.

### GPS

Since the SAT4D is self-powered, it can be used in mobile applications where power isn't available. Keep track of your SAT4D's location by using its GPS feature.

**SENSAPHONE®**  
901 TRYENS ROAD  
ASTON, PA 19014

PH: 877-373-2700  
F: 610-558-0222

WWW.SENSAPHONE.COM

**Distributed By:**